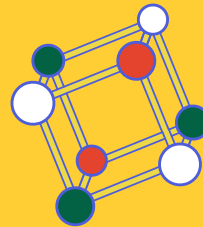
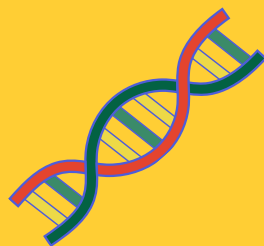
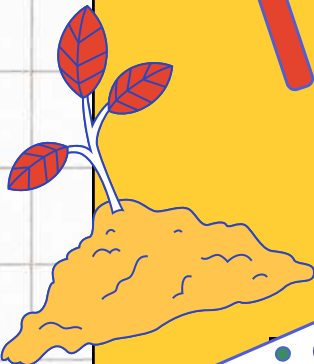
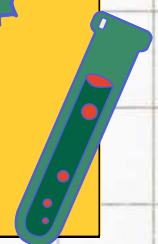


SUMMER PROGRAM

JUNE 3 - AUGUST 2



Willowwind School
Iowa City, IA



WELCOME!

Dear Willowwind Summer friends,

Thank you for choosing Willowwind's Summer Program for your family. Willowwind School is dedicated to inquiry-based learning and collaboration across grade levels. Our new and improved Summer Program will bring these same opportunities to your students in our fantastic camps. We have worked hard to create a program highlighting everything we value here at Willowwind to provide our students with a unique experience.

The new and improved curriculum for Preschool through sixth grade has been thoughtfully planned with a group discussion time that will take place daily. We will have guest speakers and work on projects between grade levels during these times. Bringing grade levels together is a highlight of Willowwind's progressive model, and we know your students will love this program as much as we do. There will be weekly field trips, either within walking distance or by bus, and many opportunities to speak with experts from the field.

Please note that K-6 themes are weekly, but classroom instruction and activities will differ according to age group.

At Willowwind, we embrace science, technology, engineering, art, and math (STEAM) and look forward to these camps' new opportunities. Get the sunscreen and water clothes ready for our three fun-filled water weeks and two weeks dedicated to exploring this wonderful city.

We look forward to the exciting, enriching opportunities for children to come together this summer. Please don't hesitate to reach out with any questions.

Thank you for choosing our camps,

Sincerely,



Brett Burr (he/him)
Programs Director

brettbewillowwind.org | 319-338-6061

Table of Contents

- 2 **Welcome**
- 4 **Preschool Summer Program**
- 5 **School Year Preschool & Spring Break Program (PreK-6)**
- 6 **Kindergarten - Sixth Grade**
- 8 **Registration & Policies**

SCHEDULE OVERVIEW

ASP:

PreK-6 ASP 3:00 (3:30 PreK)-6:00 pm

Families not registered for ASP will be charged the per day fee if students are dropped off or picked up more than 15 minutes before or after their scheduled class time. The ASP fee is \$20 per day.

CAMP SESSIONS:

PreK half-day session 8:30-11:30 am

PreK full-day session 8:30 am-3:30pm

K-6 full-day session 8:00- 3:00 pm

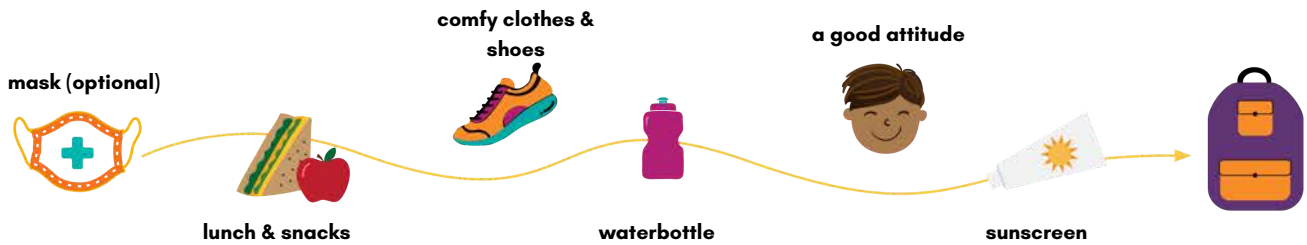
*** NO CAMP Thursday JULY 4th ***



Above: Students visit Oakland Cemetery to listen to spooky stories and sketch gravestones.

WHAT TO BRING EVERYDAY:

These things help make sure that your child has the energy, the gear, and the drive to get the most fun and learning they can from each day at camp. Please help your child remember to pack these things every day.



COVID-19 POLICIES

Willowwind continues to use pandemic management protocols based on guidance from the Center for Disease Control (CDC), the American Camp Association (ACA), and direct consultation with the Johnson County Department of Health (JCPH). Willowwind keeps a close eye on evolving practices surrounding infectious diseases and will shift policies as recommended by the CDC, ACA, and JCPH. Policies regarding isolation and facial coverings may be utilized.

We look to our summer program families as essential partners in keeping the school community free of illness. Please monitor your children's symptoms and keep students home when sick. We ask that you use caution when monitoring your child's symptoms and consider testing for COVID when symptoms present themselves and before they come to camp. An open line of communication about symptoms and test results will be essential to support our summer program.

If your student has COVID-19, please notify Willowwind School immediately. Supported by CDC guidance, COVID+ students must isolate themselves from Willowwind for 5 days and wear a mask on days 6-10.

Individuals considered to have been in close contact with an individual who has tested positive for COVID-19 will be asked to monitor symptoms for 10 days following exposure and stay home if experiencing any COVID-like symptoms.

If any student or employee tests positive for COVID, individuals at Willowwind School who are deemed close contacts will be notified of the exposure. Changes to policies will be shared with registered campers before the start of camp. Please send any questions you have to Brett Burr, Programs Director.

PRESCHOOL

FULL DAY OPTION 8:30AM-3:30PM \$260 OR HALF DAY OPTION 8:30-11:30AM \$160

<p>JUN 3-7</p>	<p>I WANT TO BE A SCIENTIST! It's time to get the goggles on! Campers this week will dive into the scientific method, write in their own science journals and do a number of experiments to get hands-on in various types of lab sciences.</p>	<p>JUL 8-12</p>	<p>I WANT TO BE AN ARCHITECT! Architects pull their unique ideas from their heads and work together to build something beautiful! Campers will learn what tools an architect uses, try to draw blueprints, and bring their ideas to life with fun art projects and hands-on activities.</p>
<p>JUN 10-14</p>	<p>I WANT TO BE A METEOROLOGIST! Students will dig into the weather! What causes significant weather patterns? How do meteorologists predict weather? What kind of storms or climate do we have in the Midwest?</p>	<p>JUL 15-19</p>	<p>I WANT TO BE A PALEONTOLOGIST! Let's talk about dinosaurs! What kinds are there? How do we think they lived? How do scientists study something from so long ago? Campers will conduct fun experiments and complete various activities about dinosaurs and paleontology.</p>
<p>JUN 17-21</p>	<p>I WANT TO BE AN ENTOMOLOGIST! BUGS! If your camper is always digging in the dirt to find a new bug, they are ready to learn about scientists studying insects. We will learn how bugs live, eat, and move in Iowa through hands-on, fun activities and experiments.</p>	<p>JUL 22-26</p>	<p>I WANT TO TRAVEL AROUND THE WORLD! Campers will stamp their mini passports this week, exploring and learning about different cultures worldwide! They will explore different wonders of the world and how cultures and communities work together worldwide. Even our littlest community members can be outstanding global citizens!</p>
<p>JUN 24-28</p>	<p>I WANT TO BE AN ASTRONAUT! What's going on in the sky anyway? Campers will spend their week jumping into their rockets and exploring the stars and planets that make up our solar system. They'll learn about the particular ways astronauts prepare for space and learn a bit about how rockets make it to space!</p>	<p>JUL 29-AUG 2</p>	<p>I WANT TO BE AN OCEANOGRAPHER! The ocean is always a fun, fascinating place to explore, and these campers will enjoy seeing what's under the waves! Campers will learn about animals in the ocean, talk about (and try to make!) some waves, and so much more in the deep blue sea.</p>
<p>JUL 1-5</p>	<p>I WANT TO BE A FARMER! Students are ready to dig in the dirt and learn about farming. We will explore what crops are grown in our local area, learn about gardening and large-scale farming tools, and plant some seeds themselves! <i>*Reduced price of \$215 (full-day) due to the holiday</i> <i>*Please note that there will be no camp on Thursday, July 4</i></p>	 <p>Learn more about our preschool at willowwind.org/montessori-preschool</p>	

WILLOWWIND MONTESSORI PRESCHOOL

2024-2025 SCHOOL YEAR

Willowwind's Montessori Preschool program aims to teach the child as a whole, guiding each child's physical, social, emotional, and intellectual growth. Through the prepared environment, calmness of the teacher, and attention to grace and courtesy, we strive to offer an educational experience based upon the teachings of Maria Montessori. We offer full-time and part-time options for preschoolers aged 3-5 years.

Certified Montessori teachers lead students in the core Montessori curricular areas of practical life, sensorial, mathematics, language, culture, and humanities. Preschool students are also provided science, art, music, and physical education instruction.



FULL-TIME PRESCHOOL

M-W,F 8:30am - 3:30pm

Th 8:30am - 2:30pm

PART-TIME PRESCHOOL

M-F 8:30am - 11:30am

WILLOWWIIND'S MONTESSORI PROGRAM FOSTERS:

- Independence
- Joy of learning
- Love of order
- Learning through discovery
- Concentration
- Self-discipline
- Ability to make decisions
- Self-confidence
- Peaceful problem-solving skills
- Care of the environment

Contact our Admissions Coordinator, Rachel Butler, at info@willowwind.org to learn more about Willowwind's preschool program or to schedule a virtual or in-person tour. We look forward to speaking with you!

FULL STEAM AHEAD SPRING BREAK CAMP, MARCH 11-15TH PRESCHOOL - 6TH GRADE

Planes, trains and automobiles...oh, my!

A week full of problem-based learning, student choice, technology integration, and teacher facilitation with a focus on connected learning—a type of learning that draws on students' interests that teachers can capitalize on while using STEAM to address real-world problems.

Spring break camp will occur March 11-15th between 8:00am - 3:00pm. K-6 camp will be a full-day and Preschool camp will be full-day with a half-day option. ASP will be available for an additional cost for all children. Registration is currently open at willowwind.org/spring-break.
ASP 3:00-6:00pm

Families who register for Spring Break classes with Willowwind will receive a special discount code to use when registering for the 2024 Summer Program. This can be applied even after a child's summer registration is completed through CampDoc.

Preschool: Full STEAM Ahead (full-day 8:30am - 3:30pm) & half-day (8:30am - 11:30am)
K-6: Full STEAM Ahead (full-day 8:00am-3:00pm)

KINDERGARTEN - SIXTH GRADE

FULL DAY 8:00AM-3:00PM \$370

JUN 3-7	<p>MAGICAL POTIONS: THE CHEMISTRY BEHIND HOGWARTS</p> <p>Does your student love chemistry and making their own magical potions? Us too! This camp will take students to Hogwarts, where they will be sorted into houses, participate in trivia, go down Diagon Alley to make their own wands, find their owls, and maybe even make some candles. We will learn all about potions and compete in Hogwarts-inspired games. Which house will win?</p>
JUN 10-14	<p>MINI METEOROLOGISTS: CLIMATE CHANGE AND WEATHER PATTERNS</p> <p>Our mighty meteorologists will discover weather patterns worldwide, and we may measure and record rainfall, create a water cycle wheel, build a weather station, learn about the Greenhouse Effect, create a terrarium, design a tornado, create "snow" during the summer, and much more! In the afternoons, they will go out and about in Iowa City to play in the water. Please have them bring all their swimming supplies, water bottles, and sunscreen and prepare for this wild ride.</p>
JUN 17-21	<p>CAMP WILLOWWIND: IOWA CITY ART AND NATURE</p> <p>Students will enjoy a week of food, fun, and games as they venture to some of our favorite local spots. Budding artists will hone their color skills in the classroom, at Willowwind's prairie landscape, and in nature at our local lakes, parks, and more while using oil pastels, watercolors, tempera paints, colored pencils, and chalk. Students will utilize their five senses to explore natural art. Make sure to bring sunscreen!</p>
JUN 24-28	<p>LOST IN SPACE: PLANETS, STARS, ROCKETS, OH MY...</p> <p>Is your student fascinated by Astronomy? So are we! Do they often wonder what happens when the sun goes down? Why do we observe changes in the sky? Students explore these questions and more as they blast off into outer space using their rockets to learn more about the planets, stars, and moons we see in the night sky. This camp will be out of this world!</p>
JUL 1-5	<p>BOOM OR BUST: MONEY, MARKETS, AND FINANCIAL LITERACY</p> <p>This is a fun and exciting opportunity for students to learn about financial literacy and budgeting. Through interactive lessons, strategy building, and creative projects, students will gain valuable knowledge about managing their money and making wise financial decisions. With hands-on activities, this course will equip students with skills that they can apply throughout their entire lives. Take advantage of this chance to invest in your future!</p> <p><i>*Reduced price of \$325 due to the holiday</i></p> <p><i>*Please note that there will be no camp on Thursday, July 4th</i></p>

KINDERGARTEN - SIXTH GRADE

FULL DAY 8:00AM-3:00PM \$370

JUL 8-12	<p>CLOUD 9: HYDROLOGY AND WATER FUN</p> <p>Students will learn about the science behind clouds and rain while making art. They will create clouds from cotton balls, like Styrofoam or foam blocks. Along with endless creativity, students should bring sunscreen, swimming supplies, and sunglasses (optional), as the class will spend part of each day outside playing in the water. Take a break from the summer heat in this Willowwind favorite! Students will stay cool at some of the area's best water destinations. You don't want to cumulo-miss-this!</p>
JUL 15-19	<p>JURASSIC WORLD: PALEONTOLOGY ROCKS</p> <p>Does your student love dinosaurs, birds, and geology? Join us for a week filled with studying prehistoric animals and their extinction, meteors, dinosaur eggs, and making fossils. Take a field trip to the Devonian Fossil Gorge with us to learn even more about geology and the study of rocks. Students will dig into their creativity and the life of dinosaurs. Play games, make new friends, and have a ferociously fun time!</p>
JUL 22-26	<p>GLOBAL CITIZENSHIP: CULTURES ACROSS THE WORLD</p> <p>Discover many countries and cultures through field trips, cooking, music, song, and dance. Visit Latin America, Africa, Asia and Europe. This camp's creative activities will help students appreciate different communities and cultures. Wherever we end up this week, we know an adventure awaits.</p>
JUL 29-AUG 2	<p>WATER EXPLORERS: RIVERS, LAKES AND OCEANS</p> <p>Dive into the Atlantic and Pacific waters to learn about the creatures that call the ocean home. Explore the science behind oceans, such as waves and currents, and why this ecosystem is essential to human life. This hands-on class will include demonstrations, experiments, and fun crafts! Take a break from the summer heat, and bring sunscreen and swimming gear; students will enjoy creek walks, play water games, and stay cool at some of the area's best water destinations. Explore the ocean deep and then go diving with our final summer camp of the season.</p>

SUMMER DISCOUNTS

Register by March 31st and waive your registration fee! Use the code *Earlybird24* when registering.

If you're joining us for most or all of our summer program, we want to say thank you with the following discounts!

- 7 full weeks- save \$25 with code 7weeks.
- 8 full weeks- save \$50 with code 8weeks.
- 9 full weeks- save \$100 with code 9weeks.

*A full week is one week of full-day classes.

REGISTRATION & POLICIES

HOW TO REGISTER

Returning campers will use their existing CampDoc account, and new families will create an account for Summer Program registration. Registration can be completed at app.schooldoc.com/register/willowwind.

Preschool Registration Requirement:

Willowwind requires a minimum registration of two consecutive weeks for preschool summer programming. Participating in consecutive weeks of summer programming allows students to become comfortable with class routines, develop independence, and encourage meaningful relationships with their peers and teachers. Be sure to take advantage of our multi-week discount!

Registrants will receive an email confirmation within two business days of registration. We will send a more detailed email confirming class dates, times, locations, and other general information closer to their start date.

SUMMER TECHNOLOGY POLICY

Willowwind School is committed to providing students access to instructional technology tools. The use of technology in the classroom is for educational purposes, such as accessing curriculum-related information, sharing resources, and promoting innovation in learning. Unless granted permission to do so by a teacher, administrator, or staff member the use of a child's personal technology devices are not permitted during camp hours (8:00am - 6:00pm). Willowwind's Summer Program catalog will note if technology from home is required for a class. If technology from home is recommended but not required, Willowwind will communicate this in its camp-specific communication leading up to the week of camp.

WHO CAN REGISTER

Public, private, and home-schooled students in preschool through Grade 6. Elementary students should register based on the grade they will enter in fall 2024. Students must be at least three years old and toilet-trained for preschool programs. Willowwind provides equal opportunity to participate in programs and does not discriminate by gender, sexual orientation, marital status, socioeconomic status, disability, race, national origin, color, religion, or creed.

PAYMENT & FEES

A deposit of 50% will be required at the time of registration for all summer programs (including the registration fee and any optional ASP fees). Any remaining tuition will be billed in equal monthly installments throughout the spring (see specific billing dates online when registering). If payment is not made in full when the payment plan is complete. We reserve the right to cancel your registration. We process all registrations in the order in which they are received. We accept registrations as long as there is space available. We do not offer prorated tuition for absences or late starts. We cannot accommodate drop-ins. There is a registration fee of \$25 per student.

ATTENDANCE

In order to get the most out of each class, we expect children to attend every day of their enrolled classes, except in the case of illness or emergency. Tuition will not be prorated and refunds will not be issued for missed classes.

BEHAVIOR POLICY

A high-quality program can only occur in an orderly, mutually respectful, caring environment. Child guidance is a process where children take increasing responsibility for their actions. At Willowwind School, we take the happiness and safety of our participants seriously. Therefore, we work very hard at creating a safe and fun environment. Along with our efforts, we need the children to help us by following simple rules. Below is our behavior agreement.

Please read this Behavior Contract with your child and ensure they understand our camp's behavior policies:

- I will listen to the staff and follow directions.
- I will act in a caring way, I will not hit, bite, tease, harass, or bully others.
- I will respect other people's belongings by keeping my hands to myself.
- I will use my indoor voice when speaking inside.
- I will respect all property and help clean personal messes.
- I will use appropriate language when speaking with others.
- I will respect other people's personal space by keeping my hands and feet to myself.
- Before leaving a space, I will ask for permission and stay under adult supervision.
- I will respect other people's feelings with a positive attitude when speaking.
- I will remain with staff on field trips and follow the rules.

Not abiding by these rules may result in suspension or removal from the program.

- All incidents will be handled on a 3-incident system, except hitting, fighting, and inappropriately touching another camper.
- Hitting, fighting, and inappropriately touching another camper will result in an immediate 1-3 day suspension from the program.

All other incidents will be handled as follows:

- 1st Incident = Verbal Warning
- 2nd Incident = Written Warning & Parent Contact
- 3rd Incident = 1 to 3 day suspension & Parent Meeting

*Please Note: More than 3 Incidents will be subject to camper dismissal from the program.

Willowwind School staff and management reserve the right to dismiss/dis-enroll a child from the day camp program if the child's behavior is disruptive to the program or compromises the safety of themselves, other children, or staff.

CLASS CANCELLATION POLICIES

We want all students to be satisfied with their experiences at Willowwind School. If, after attending the first day of class, you decide not to continue, let us know before the second class, and your tuition will become a credit, which you may use toward another available space in a summer 2024 class. After the second day of class, we will not adjust tuition or enrollment.

- If you cancel your registration at least four weeks before the class begins, tuition will be refunded, less a \$50 cancellation fee per class.
- Refunds will only be given if you cancel your registration less than four weeks before the class starts. Any tuition paid for the canceled class, minus the \$50 cancellation fee, becomes a credit toward another 2024 Willowwind Summer Program class. Any difference in cost from the new class will not be refunded.
- No credit or refund is given for cancellations occurring within two business days of the start date of the class.
- If tuition has not been paid in full by the time the monthly payment plan is complete, and no action to cancel has been taken, no refund or class credit will be issued, and the registration will be terminated.

Cancellation by Willowwind: We reserve the right to cancel a class if enrollment is insufficient. Any tuition paid will be refunded in full.

AFTER SUMMER PROGRAM (ASP)

Our After Summer Programs (ASP) is available for preschool through sixth grade students. When registering for courses, ASP will be listed as an add-on option available when registering via CampDoc. Willowwind can accommodate drop-ins with prior notice at \$20 per day for ASP. Please be sure to call the office at 319-338-6061 before dropping in.

ASP: 3:00pm-6:00pm \$80/week

CANCELLATION OF ASP

- ASP fees will be refunded if cancellation occurs at least four weeks before the start date of the program.
- Cancellations in less than four weeks result in ASP fees being credited towards another Willowwind summer class during summer 2024.
- No credit or refund is given to ASP cancellations within two business days of the class start date.
- If ASP fees have not been paid in full by the time the monthly payment plan is complete, and no action to cancel has been taken, no refund or class credit will be issued, and the child's registration in ASP will be terminated.
- If a student misses ASP, is picked up early, or is dropped off late, fees will not be prorated.

WHY WILLOWWIND?

IQ + EQ

Willowwind balances academic achievement with social and emotional intelligence development, emphasizing students' respect and appreciation for themselves, others, and the natural world. This gives students a sense of belonging, a climate of trust, and a joyful merging of social, emotional, and intellectual development.



WILLOWWIND MISSION



Willowwind School is a joyful learning community where children develop their unique potential through child-led inquiry.



CURIOUS ABOUT WILLOWWIND'S SCHOOL YEAR PROGRAM?

*Now enrolling for 2024-25!
PreK-6th grade spots available.*

Willowwind is committed to a rigorous academic program rooted in experiential and project-based learning. We encourage independence, risk-taking, and critical thinking across the curriculum. We equip our students with the skills to approach complex challenges and a changing environment with curiosity, persistence, and leadership.

LEARN MORE AT WILLOWWIND.ORG.

