



WILLOWWIND SCHOOL ANNUAL

REPORT

**2017
2018**

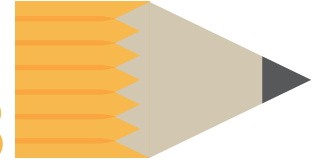
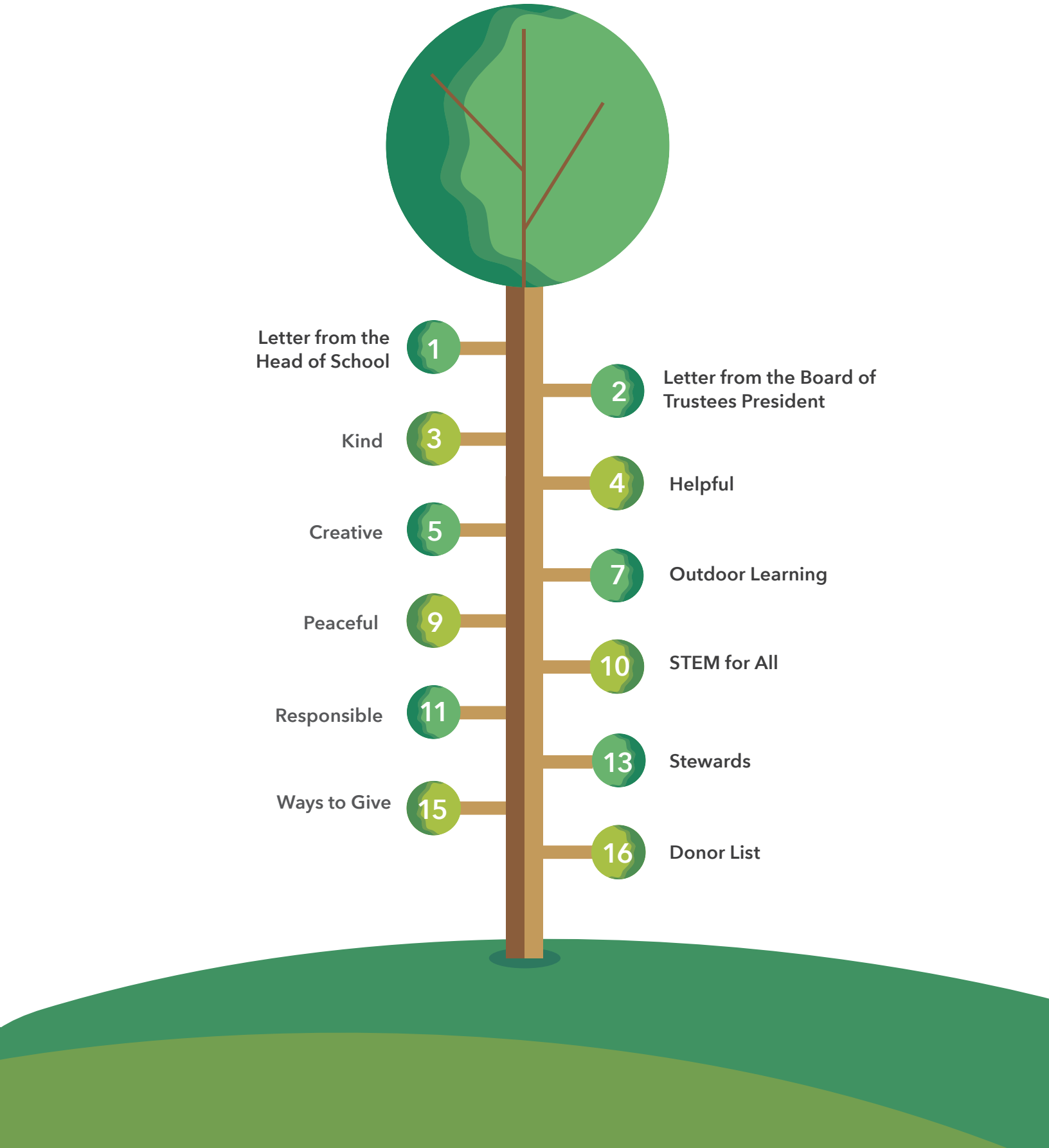


TABLE OF CONTENTS



Letter from the
Head of School

1

Letter from the Board of
Trustees President

2

Kind

3

Helpful

4

Creative

5

Outdoor Learning

7

Peaceful

9

STEM for All

10

Responsible

11

Stewards

13

Ways to Give

15

Donor List

16

MISSION STATEMENT

Our mission at Willowwind School is to develop in our students:

- Curiosity and a love for learning
- Self-esteem and self-discipline, combined with social consciousness
- Emotional sensitivity and respect for others
- The ability to think flexibly and critically, to problem solve, and to express themselves clearly and constructively
- The acquisition of academic skills and creative pursuits
- And an appreciation and respect for other cultures, religious and ethnic backgrounds, and for the natural world



MICHELLE BENINGA

Head of School

Dear Willowwind Families and Friends,

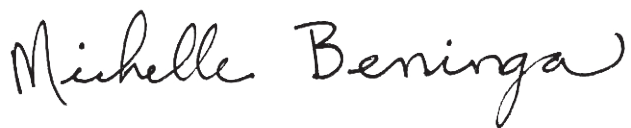
Willowwind School believes establishing a safe and challenging environment is critical in developing the whole child. This environment is fundamental in shaping students who feel both supported and inspired and is critical in building a foundation where every child believes in their purpose and success within their school community and beyond. Willowwind is honored to work deeply and passionately with our students and families. It is our privilege to play a pivotal role in the world of our children.

This Annual Report highlights the social, emotional, and academic accomplishments of our students and community. The theme of this report was born from an idea, a request, a passion of our students, and Willowwind School is excited to share their passion with our community. In Fall 2017, the Willowwind student body approached faculty to reevaluate the character traits that define Willowwind students and who they strive to be. They requested a fresh look at these traits to ensure they met the desires and needs of our current and future students. K-6 students brainstormed and researched relevant attributes and presented information about them to the school community. Students then voted on the top traits they felt best defined the students they desire to be.

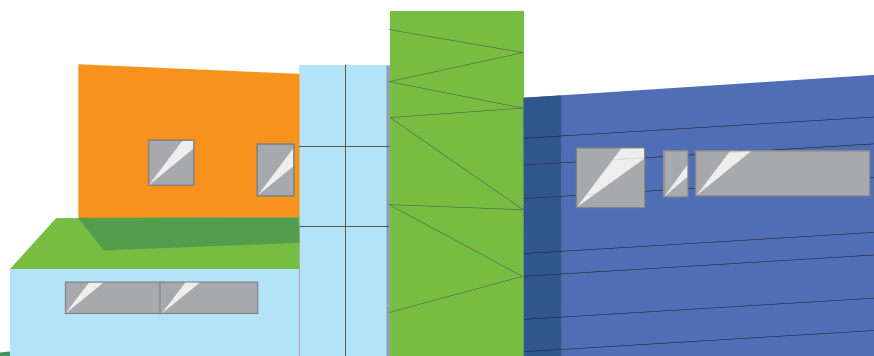
Respect. Helpful. Kind. Peaceful. Creative. Responsible. Steward. We are proud to present the students' final seven traits to our community. Through advocacy and the use of their voices, Willowwind students learn purpose, care, ownership, and success are possible for every child. Willowwind students develop self-empowerment when they are encouraged to play an active role in their education.

Willowwind School is proud to nurture students' whole child development. This Annual Report highlights their development and our passion for their success. Celebrate with us in the pages of this report. Join us at Willowwind School where students are empowered to become lifelong learners and compassionate leaders. Here's to another year of making the world a better place for all!

Kind Regards,



Michelle Beninga
Head of School



BRIAN CODD

Board of Trustees, President

Dear Willowwind Families and Friends,

Since Willowwind's founding in 1972, the school has strived to help students become caring, collaborative global citizens, connected to one another and the world around them through problem solving and critical thinking. Willowwind's child-centered, child-led approach to education focuses on project-based learning and critical inquiry. The compassionate, partnership-based nature of the Willowwind curriculum is historically rooted, and it is well nourished and cultivated by our parents and families, by the Board of Trustees, and by our amazing faculty and staff. Our parents and families engender these feelings by fostering and supporting a home environment of inquiry and reflection. Our Board models the child-centric spirit of the school in all its work, by asking how each of our decisions will impact our students. Our faculty and staff work together, tirelessly, to incorporate student-articulated interests into their daily and unit lesson plans, to lend immediacy and context to our children's pursuits.

As we look back on this past year, please join the Board in celebrating the successes of our students and in offering gratitude to their amazing teachers. We thank you for your students and their role in improving our community both near and far. We also thank you for the support you have given to us which helps our students fulfill their mission of living the Willowwind Way.

They say it takes a village to raise a child. Willowwind has been, and will continue to be that incredibly caring, broad-thinking village; that precious resource which helps develop children who are engaged in creating their own best learning experiences, and in helping one another and the world along the way. Please join us in helping to continue and expand the work of our students to make sure the Willowwind Way is widely practiced here at home and far beyond our reach.

On behalf of the Board of Trustees, thank you, again!

Sincerely,



Brian Codd
President, Board of Trustees

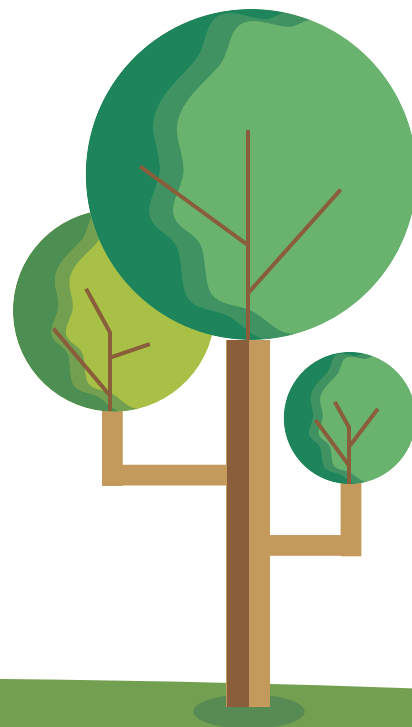
2018-19 Board of Trustees:

Brian Codd, President
Pope Yamada, Secretary

Trustees:

Zoe Eskin
Megan Lavelle
Phoebe Martin
Sarah Richardson

Karen Butler, Vice President, 2017-18
David Ryfe, Trustee, 2017-18



KIND

"Acknowledge others' feelings and opinions by listening."

Character Education

In the early part of the school year, the K-6 students dedicated Group Discussion time to reviewing and revising Willowwind's list of character traits. It now better suits what they believe to be the needs of our student body, school, and wider community. The list, voted on by our K-6 students, is as follows:

Willowwind student and staff will strive to be...

- respectful
- helpful
- kind
- creative
- responsible
- peaceful
- stewards

Students did an incredible job coming up with these traits and living them each day. A mural based on these words was designed by our Communications Coordinator, Dana Smith. With the help of Teaching Artist, Ryan Bentzinger, the mural was painted in the Gathering Space so that students and staff alike can be reminded of, and inspired by these words.



Our Character Traits mural in the Gathering Space.

Papa Craig

Willowwind families take the invitation to volunteer to heart! From August to May, we have volunteers in the building almost daily. Parents and extended family multiply what the faculty are able to do by driving on field trips, keeping up with the garden and landscaping, helping with school celebrations, and so much more. This May we took a moment to celebrate one of our longest and most dedicated volunteers, Craig Kessler.

Craig, known as "Papa Craig" here at Willowwind, is a grandparent to two Willowwind students. Craig has been a volunteer reader in ALL of the Willowwind classrooms, from preschool through sixth grade. He brings books to life for his eager audiences. The students enjoy their regular visits from Papa Craig. Thank you, Craig, and all our volunteers who contribute so much to our school. We are grateful for your assistance and for the example of community service you present for our students.



"Papa Craig" Kessler captivates preschool students.

Kindness from Kindergarteners

The kindergarteners spent the spring semester learning all about kindness, including what kindness is, and why it's important to be kind. They discussed different ways to spread kindness throughout their homes, school, and even the outside community. After splitting into Kindness Teams, the kindergarteners brainstormed many acts of kindness they could do for others in their home and school communities, and then they put their plans into action! By the end of the Kindness unit everyone was in agreement that spreading kindness makes the world a better place!

HELPFUL

"If a friend spills markers, you can help pick them up."

K-2 Service Learning Projects

At Willowwind all students participate in Service Learning projects throughout the year. Through these activities students come to understand the importance of community and take pride in being helpful within their classrooms, school, and wider world.

Kindergarten through second grade students planned and completed service learning projects to support outdoor exploration and play. Kindergarteners painted a climbing structure on the playground, while first and second graders created nature boxes. These boxes contain natural materials like strips of bark, sticks, seed pods, and rocks for imaginative building and play.



Ms. Eryn & Khristian P. 2nd grade, build nature boxes on the K-6 playground.



Student Public Service Announcements

Project-based learning is an essential part of the curriculum at Willowwind. Combining research and creativity our fifth and sixth grade classes created a series of PSA posters focused on an environmental concern currently impacting our world. Students selected a wide variety of topics from plastic pollutants to soil and water contamination, delving deep into the impact of each. Students then used their research to create attention grabbing posters which informed viewers about their topic. What a great way for students to learn and inform all at once.



3-6 Hurricane Relief Project

In the wake of Hurricane Harvey, Willowwind students felt compelled to help the countless individuals whose lives had been impacted. They made a plan to hold a mini farmer's market at the school, selling handmade bracelets, cards, tie-dyed t-shirts, homegrown vegetables, and a variety of yummy baked goods. As luck would have it, the Iowa City Farmer's Market was hosting Kid's Day at the market that same week. This offered an opportunity for students to expand their sales, thereby expanding their impact. Through their sales students were able to raise \$1,250; all of which was donated to All Hands Volunteers. We are so proud of the compassion and drive these students demonstrated as they reached out well beyond their local community to make a positive impact on the world.



Poster by Luis S. and Ankur K.



Poster by Rosie T. and Aubrey B.



3rd-6th grade students sell their handmade items to raise money for hurricane relief.

One Book Two Book

One Book Two Book is a much loved and anticipated event in the Iowa City community. This UNESCO City of Literature event recognizes and celebrates local student authors in grades 1-8. Rosie T., a sixth grader, was selected as Willowwind's representative to read at the One Book Two Book banquet in February which kicked off the weekend-long event. Also recognized were Jord G. who won the second grade "The Write Stuff" category for language, structure, clarity, and emotional impact, and Avery C. who won the first grade "From the Heart" category for creativity, passion, and expressiveness. Honorable Mentions went to fifth graders Luis S. and Charlotte D.

Poetry in Public

The 16th annual Poetry in Public Program, was sponsored by the Iowa City Public Art Program. Local writers of all ages, writing ability, and experience were encouraged to submit entries to the contest. Nine Willowwind students had their work selected. Congratulations to Rial S., Ruby C., Tai C., Cordelia Z., Kaivon J., Aryan H., Elizabeth P., Kirin Y., and Claire S. The winning poems were displayed on Iowa City buses, at the Iowa City Public Library, and at the Robert A. Lee Recreation Center from May into the fall. Selected poets also had the opportunity to read their poem during the Iowa Arts Festival in June.

Authors' Cocoa

This long standing tradition is a celebration of our students as writers. Kindergarten through sixth grade students shared the stage with their Partner Family and read an original piece of writing for the Willowwind community and beyond. Parents, family, friends, and passers by stopped in to T.Spoons café at the Old Capitol Town Center and enjoyed a variety of poetry, stories, and songs.

Montessori Preschool students worked with their student mentors to write their own works of poetry. Our youngest learners had the opportunity to share their work with friends, family members, and caregivers during their own version of Authors' Cocoa.

Untitled (excerpt)
by Rosie T., grade 6

I will never be able to explain
how being hit by stones
will never be the same as the pain
of the names that you get called
that make you appalled
but you start believing
that they aren't just words but sticks and stones
in the form of a code
that only some people will be able to unravel.

Night Poem
by Cordelia Z., grade 3

Owls screeching in the night
Wolves howl as the sky grows dimmer
The moon shines so bright that it makes the lake glimmer
Fish are swimming like shooting stars
Frogs croaking like crickets
The sky is like a full blanket of glittering stars
Sunrise is happening, world is waking



VidyaK., Amara B., and Nina Y. present at Authors' Cocoa

CREATIVE

"Making something out of your mind
that is new."

> > > > > > > >



**\$250 RAISED
THROUGH VISTING
ARTIST PROGRAM**

Visiting Artist's Gallery

Willowwind School is a proud supporter of the Arts, and enthusiastically continues to connect and collaborate with the local art community. The Visiting Artist Gallery in the lobby of our school was the brainchild of our Teaching Artist, Ryan Bentzinger. During the 2017-18 school year Willowwind featured a new local artist every few weeks. Each featured artist led a Group Discussion with our K-6 students to explain their medium, process, content of work, and experience as an artist. Displayed artworks were for sale with a generous 20% of the artist's proceeds donated back to the school. These donated funds went directly towards advancing Willowwind's Fine Arts program.

Thank you to our Visting Artists; Ryan Bentzinger, Jon Sims, Derek Blackman, Jan Duschen, Dawn Harbor, Dana Smith, and Xochicoatl Narciso Nmex.



Jon Sims, Graphic Artist



Derek Blackman, Photographer



Jan Duschen, Printmaker

Legacy Projects

Legacy Projects are a great way for our graduating students to leave their mark on the school as they embark on new adventures. This optional project has taken many forms over the years. Some years the graduating class has completed a group project of their choosing, and some years, like this one, students chose independent projects based on personal interests and strengths.

Sixth grade students Miranda R. and Ankur K. produced two very different but equally thoughtful projects. Miranda designed and painted a mural to beautify a wall enclosing our outdoor recycling and waste bins. Ankur used his drone and videography skills to create a promotional video telling prospective families about the Willowwind experience. We are so very proud and grateful for the extra work these students put into bettering our school.



6th grader, Miranda R., working on her legacy mural with Teaching Artist, Ryan Bentzinger

Preschool Play Extension

Preschoolers spend over a quarter of their school day on the playground stretching imaginations, improving coordination, growing and troubleshooting friendships, building strength, and connecting with nature. During the 2017-18 year, Willowwind School continued to create spaces that support and inspire these crucial areas of early childhood growth.

In April, Willowwind built a new play structure designed by Mike Nolan, a Willowwind parent and local independent architect at Horizon Architecture. This new structure has multiple levels for climbing and jumping, bars to swing on, and a balance beam. The favorite spot is the market place counter where students pretend to run an ice cream shop or a lemonade stand. A tunnel and ladder bridge for climbing on and through was also added to the play area.

All of these additions were specially designed to encourage development of gross motor skills of the preschoolers and to enhance existing outdoor space. Smaller items like bilibos and large red spinning tops were also purchased. Additionally, improvements began on the butterfly garden to create a larger outdoor play space for the preschoolers and to honor Maria Montessori's belief that nature plays an important role in a child's development. Garden stepping stones were made by students and families to encourage exploration of various garden areas.



Preschool playground enhancements will impact our youngest learners for years to come.

Ralston Creek

Willowwind has a long history of utilizing the great outdoors as a classroom whenever possible. We are fortunate to live in an ecologically diverse area with forests, prairies, and wetlands near by which foster our appreciation of nature and our passion for environmental education.

Our fifth and sixth graders in particular spent a good portion of their year exploring various environments, waterways, and the impact of human behaviors on natural resources. As a tributary of the Iowa River, Ralston Creek provided students an incredible opportunity for exploration and study. Every child got to know the creek at their level of comfort and developed questions that guided their explorations for the school year.



Sixth graders Miranda R. and Claire S. explore and collect samples at Ralston creek.

Solar Panels

Our 2017 Spring Giving campaign focused on adding solar energy to Willowwind. Through a partnership with Tim Dwight and Integrated Power Corporation, UICCU's Give and Grow initiative, and generous donations from families and community members, Willowwind was able to install 10, 290-watt panels on our campus.

During the upcoming school year, students will begin to reap the benefits of monitoring real-time data from the panels. Consistent monitoring over time will allow students to look at the impact of sun exposure and seasonal conditions on the output. From basic observation and data collection to creating hypotheses and predictions, we are excited to get the students further involved with solar energy exploration.

*"Let Nature be your teacher."
— William Wordsworth*

OUTDOOR

School of the Wild

Willowwind's third and fourth grade class attended School of the Wild last spring for four days of character building, outdoor adventure, and curricular extension. Willowwind teachers partnered with staff from the University of Iowa to design and implement activities to meet the specific curricular needs, inquiries, and interests of the class.

Students spent a day exploring the wetlands of MacBride Nature Recreation Area via canoe and pontoon boat. They collected and studied some of the first active frogs of spring and found evidence of beaver activity in the area. They banded and released songbirds, observed birds and other woodland creatures from a bird blind, and visited the Iowa Raptor Project to view several birds of prey in captivity. Students studied fossils from the Geology Department then searched for examples of those fossils in the field. They studied prairie plants and wildlife by tracking and examining found artifacts to collect clues about wildlife activity. Students thoroughly enjoyed climbing, playing, and exploring their curiosities in the peace of the wilderness over the course of their time at School of the Wild.

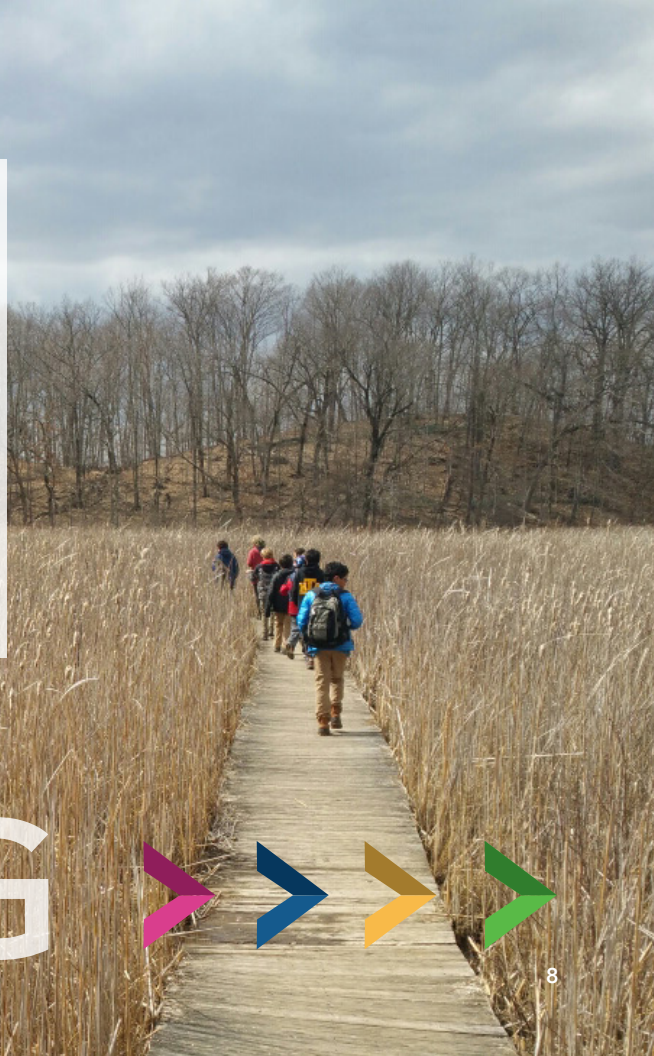
Funds for this learning adventure were raised through the annual Owl Café, a student run fundraising breakfast.



Camp Edwards, Wisconsin

Once again our fifth and sixth grade students embarked on a week long trip to YMCA Camp Edwards in East Troy, WI. This trip offered students the opportunity to grow closer through team building, gain new skills and new experiences, face down fears, connect with nature, and learn just how much strength they each had within. Rachel DeMaris, sixth grade teacher, says one of the joys of this trip was watching her students grown in real time. "I watched each and every child be their personal best, maybe even a best they didn't yet know existed."

This trip was funded entirely by student led fundraising efforts like Prairie Café, pajama parties, and Popcorn Friday sales.



LEARNING



30 for 30

April 20, 2018 was the 19th anniversary of the mass shooting at Columbine High School. To mark this date, and to keep attention on stopping school violence, students across the country planned and participated in a National School Walkout.

A Willowwind sixth grader brought this event to our attention and requested that Willowwind's fifth and sixth grade students participate. A 30 minute remembrance was planned to honor their request and give students an opportunity to show solidarity with those who have been affected by gun violence.

Willowwind observed "30 for 30" from 9:50-10:20 AM. The number 30 represents the 13 people killed in Columbine, Colorado on April 20, 1999, and the 17 who died in Parkland, Florida, on February 14, 2018. Students met to briefly discuss the significance of the day and the purpose of the walkout. Participants held 30 seconds of silence for the individuals who died in Columbine and Parkland, followed by a "30 Words" writing observance. In this exercise, students were challenged to write an original 30-word piece that expressed their thoughts and emotions around school safety, gun laws, student activism, or any other related issue. Each word stood in tribute to those who can no longer share their own voices with the world.

We thank our families and staff for their support of our students' big hearts, open minds, and thoughtful reflections around this important issue impacting youth in America. We are so proud that Willowwind students are using their voices to express their wants and needs for a better, safer world.

PEACEFUL

"Taking a breath, being quiet and mindful."

"Today we stand together in the rough, sad, and scary world as all the kids in these shootings watch as more kids join them in the sky."

-Fifth Grade Student



STEM FOR ALL

Governor's Council STEM Grant

Our preschool through second grade students were named as recipients of the Governor's STEM Advisory Council's Ramps and Pathways grant.

Through this grant, Willowwind's lower school students can explore the engineering process and mathematics of spatial thinking and geometry through the construction of marble runs; mathematics and literacy skills through data collection; physics of force and motion through conversations and retesting; and 21st century learning skills related to creation and innovation. Willowwind received curriculum, materials, and training related to laws of motion. What a great way to bring even more STEM to our young learners!



Max B. explores the Ramps and Pathways materials.

Microscopes for Foxes and Wolves

We are thankful for the many ways our families fulfill needs at our school and take initiative to help in ways they are excited about. In October, Sailesh and Kunjal Harwani found a way to enhance science education by coordinating a donor effort and making a personal donation to purchase a classroom set of 13 microscopes, digital camera, and prepared microscope slides in the amount of \$1,304.

"Having dinner together with our family led to the most inspiring question from my eldest son Ishan, 'Dad did you know you are eating bacteria and germs in that yogurt?' It turned out that Ms. Rachel was teaching the sixth grade students about bacteria and the microscopic world. So we asked, 'what did the bacteria look like?' Surprisingly, he didn't know and provided an explanation: 'We only have two microscopes so we can't all use them.' At that moment we identified a void in the resources of the students' scientific education. We vowed to find a way for each student in the science classes to be able to learn how to use a microscope.

"The morning we delivered 13 microscopes to the students with a set of professional tissue slide sets was remarkable! They were ecstatic, with one student asking 'Why are you all being so nice to us?' Students have gone on to look at swamp water, study amoebas, and get up close and personal with plant stoma. Our giving philosophy is to give by filling a void with a meaningful, tangible, and long-lasting impact. Together, if we all continue to find small and large needs and strive to fill those voids with meaningful contributions, we believe that Willowwind--as a living organism--will be far greater than the sum of the individual tangible contributions. We encourage families to look for these needs and fill them in their own way."



Students Luis S., Rosie T., and Aubrey B. view slides with new microscopes.

-Sailesh Harwani,
Current Willowwind parent

➤ ➤ ➤ ➤ ➤ ➤ ➤ ➤ ➤ *"It's not that I am so smart; it's just that I stay with problems longer!"*
- Albert Einstein

RESPONSIBLE

Iowa State History Fair

Every year, National History Day® (NHD) frames students' research within a historical theme. The 2017-18 theme was "Conflict and Compromise in History". The intentional selection of the theme for NHD is to provide an opportunity for students to push past the antiquated view of history as mere facts and dates and drill down into historical content to develop perspective and understanding.

Five sixth grade students competed in the 2018 Iowa State History Fair. Nina Y. placed third in the state with her website "The Wealthiest Player: The Hidden History of Monopoly". This placement made Nina the runner up to represent our state at the National History Day Contest. Congratulations, Nina!

Ginger M. advanced to the final judging round finishing sixth in the state with her exhibit "And Yet It Moves: Galileo vs. the Vatican"; Claire S. presented "The Last Queen of Hawai'i: The Forced Abdication of Lili'ouakalani", Miranda R. shared "A Beautiful Mind in a Toxic Time: Alan Turing's Conflict", and Ruby C. presented "A Sticky Tragedy: The Boston Molasses Flood".

We are so proud of these students for all the hard, thoughtful work and dedication demonstrated over the many weeks of research and multiple rounds of judging and presenting.

Spring Learning Showcase

During this event students of all ages were offered opportunities to accept challenges and take risks as they worked on their public speaking skills. Preschool students began in their classroom by demonstrating their favorite Montessori works to family members and caregivers. This opportunity was essential in providing our youngest students practice in beginning presentation skills as they share and explained, in their words, important aspects of the Montessori classroom. K-6 students presented in the Old Capitol Museum on the University of Iowa campus. This public venue added an authentic opportunity to share their projects with our larger community.

Students were articulate and passionate in presenting their works, projects, and performances with our community. The students should be proud. It was a pleasure working together to encourage the success of our students through meaningful learning opportunities.



Clockwise from left: Miranda R., Ruby C., Ginger M., Nina Y., Claire S.



Alicia A. shows off one of her favorite counting puzzles during the Preschool Learning Showcase.



Students Ishan H., Ankur K., Maddie S., and Tallulah P., display their projects in the Old Capitol Building.

STEWARDS



Music Fundraisers

In addition to general support of our school, some parents choose a specific area or program to sustain and enhance with their volunteer hours and personal donations. The Singleton family has been instrumental in providing support to the Willowwind music program, with donations totaling more than \$1,400 since 2015. Deborah and Brian Singleton have donated a soprano metallophone through the spring Buy-A-Bar effort, matched the annual can drive total, and directed donations to the program's biggest needs.

"Supporting Willowwind during our daughter's time as a student was always important to our family. With all the cuts in the arts in schools, we chose to focus our primary support on Willowwind's music program. Music classes were integrated into Willowwind's global view by opening students' eyes and minds to different cultures through music. Different instruments, such as the African drums that were purchased through fundraising efforts, make music an integral part of the school curriculum. We strongly encourage families to support Willowwind in whatever way they can so the school can continue its tradition of providing a unique and wonderful education to its students."

*-Deborah Singleton,
Willowwind Alumni Parent*

Spring Giving Campaigns

Our annual Spring Giving campaign is a time in which we focus on a specific project or goal for the school. In conversations with our teachers throughout the year, we continued to hear the need for additional outdoor play equipment, activities, and structures for all students.

As with previous years, our spring campaign ran in conjunction with the University of Iowa Community Credit Union's Give & Grow for Schools initiative. Throughout the month of April, UICCU offers to match their members' donations up to \$500 each to the school of the donor's choosing.

We are pleased to share that we fulfilled and surpassed the UICCU's Give & Grow initiative's \$5,000 maximum match. Willowwind's families and friends donated \$5,222 through UICCU, meaning we received \$10,222 from the effort! We also received approximately \$570 through other donations to support our spring campaign. Thank you to all of our families and extended community for your generous support of our students.



Students Emily V. and Max B. playing ukelele with music teacher Ms. Hannah.



Parents building the new climbing and play structure on the preschool playground.



Families working together in the community garden.

Annual Fund

Annual giving is the single most important source of non-tuition income for our school. The Willowwind Annual Fund provides support for the areas of greatest need and gives leadership the flexibility to make necessary choices throughout the year.

Our priorities and allocations vary by year, but funds are consistently applied in the areas of: professional development for our inspired faculty members; flexibility for special projects, field trips, and guest speakers; and funding for our unique after-school, and enrichment programs.

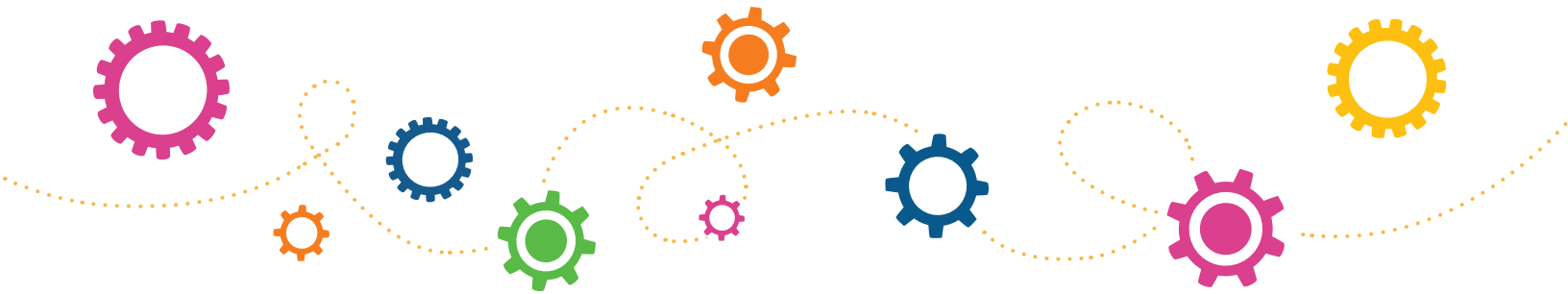
Consistent with most independent schools nationally, tuition and service fees only cover approximately 80% of the actual cost of a student's education. Annual giving is a year-long effort to maintain and enhance a Willowwind education.

Gears of Giving

During the 2017-18 school year, we added a colorful display to our front entryway as a visual representation of our Annual Fund support. For each donation throughout the year we added a gear. The larger the gift, the bigger the gear. As with Annual Fund donations, a greater impact can be made when we work together!

"Willowwind was a life-changer for our family, and we want to ensure that other children have the opportunity to benefit from the unique and special experience the school provides. As a former Willowwind parent and trustee, I choose to support the annual fund because it affords the greatest flexibility in addressing the school's most pressing needs."

-Karen Butler
Board Member and Willowwind Alumni Parent



OPERATING EXPENSES

Salaries & PR Taxes	646,764
Summer Camp	86,388
Building & Utilities	97,457
Scholarship Award	33,200
Program Expense	26,180
Technology	16,052
Supplies	30,020
Enrichment Expense	12,283
Interest	155,702
Other	72,407
Total Operating Expense	1,176,453

OPERATING INCOME

K-6 Tuition	792,091
Preschool Tuition	320,083
Summer Programs	207,675
Donations	45,315
Enrichment	18,631
Other	2,058
Total Operating Income	1,385,853



"Stewardship means taking care of something, like the environment."

WAYS TO GIVE

Gift in Kind Donations

In-kind donations are a type of charitable giving in which goods and services are given instead of cash donations. Throughout the year there are organized opportunities to give items to Willowwind, such as the Snowman Wish List, Harvest Festival silent auction items, and food for various events. We also welcome the creative ways our families and friends have gifted items such as microscopes, musical instruments, books, and more.

If you have interest in supporting Willowwind with a gift in kind, please reach out to the office or a teacher to discuss the specific needs and assess how your gift can best help our school. If you have questions about making a donation to Willowwind, please contact our Development Director, Laurel Hibbard.

UICCU Give & Grow Campaign

Annually in April, the University of Iowa Community Credit Union's Give & Grow to Schools initiative offers members the opportunity to make a donation up to \$500 per household to local school foundations. The UICCU matches these donations up to \$5,000.

Willowwind School has received more than \$20,000 from UICCU since 2014 through this generous initiative.

Learn more at <https://www.uiccu.org/uiccu-give-and-grow-initiative>.

Volunteer

Whether you read to preschoolers, help with event preparations, pitch in on work days, or chaperone a field trip, it really does take a village! There are a number of volunteer opportunities throughout the year and we encourage individuals to help in any way they can. Families gave over 700 hours in volunteer time during the 2017-18 school year. Thank you for your continued support of our school, our mission, and our future.

AmazonSmile

AmazonSmile is a simple and automatic way to support Willowwind at no additional cost to you. When you shop at AmazonSmile, you'll find the exact same prices, selection, and shopping experience as Amazon.com, with the added bonus that Amazon will donate a 0.5% of the eligible purchase price to your favorite charitable organization. On your first visit to AmazonSmile, designate Willowwind before you begin shopping. From then on, every eligible purchase you make from the site will result in a donation to our school.

Since 2015, Willowwind School has received \$329 from the AmazonSmile Foundation.

Learn more at www.smile.amazon.com.

Hills Bank Classroom Cash

Classroom Cash empowers you to earn money for the private school or public school district of your choice in our community each time you make a purchase with your Hills Bank debit card or business debit card. With every purchase, the bank will make a donation back to the school at various times throughout the year. There is no cost to you and set up is a breeze.

Thanks to this thoughtful program, Willowwind has received \$1,251 from 18 households through the Classroom Cash program since 2004.

Learn more at www.hillsbank.com/classroom-cash.



Parent volunteers lend a hand at the annual Owl Cafe fundraiser.

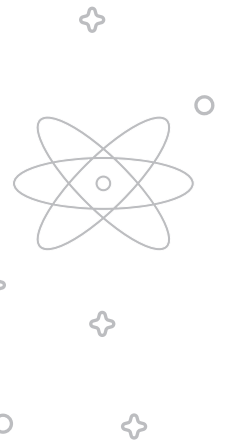
*"For it is in giving that we receive."
- Francis of Assisi*





950 Dover St. Iowa City, IA 52245

NONPROFIT ORG
US POSTAGE
PAID
IOWA CITY, IA
PERMIT #355



1,534

741
Family volunteer
hours logged.



6
Students participating in
the Iowa State History Fair.



**Cans and bottles collected
for the Music Can Drive.**

980

Total feet scaled by 5th-6th
grade students while rock
climbing at Camp Edwards.



45
Field trips taken by
preschool through
6th grade students.



Learn more at willowwind.org